

Data Entry and Reporting System – Installation Guide

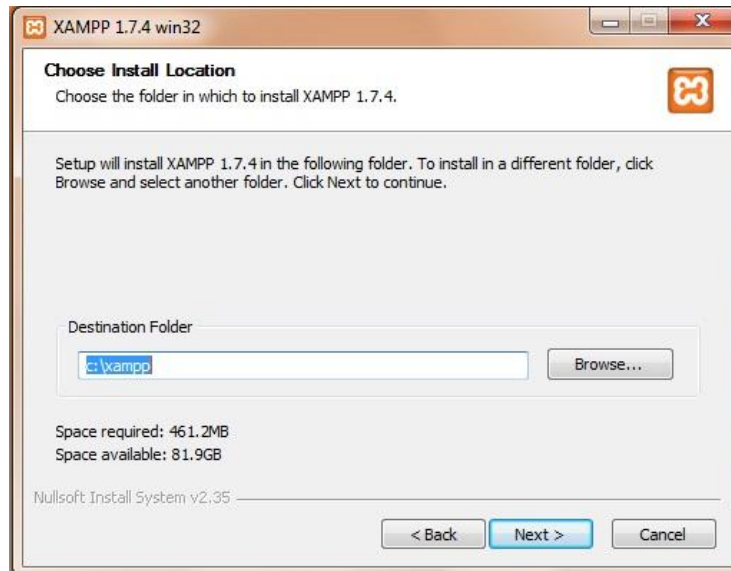
1. Install Xampp or Wamp on your system. (Xampp is recommended).

a. Install Xampp(Windows)

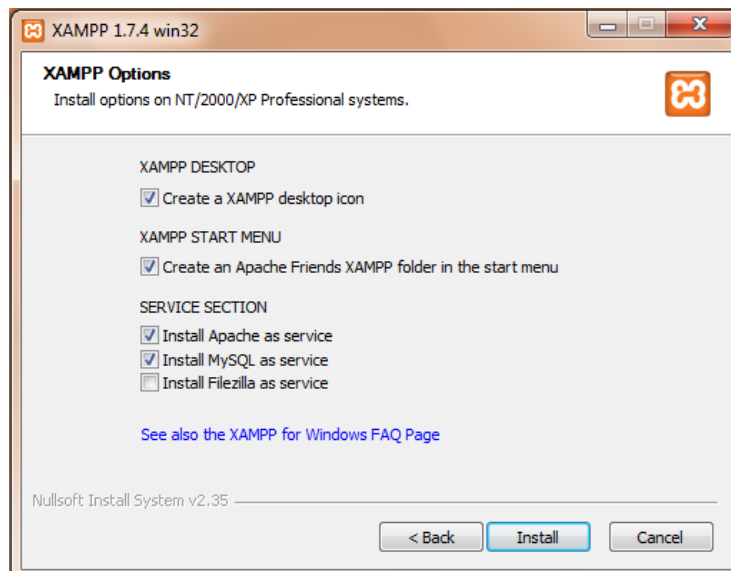
(If you have either of these already installed on your computer skip this)

Download Xampp - <http://www.apachefriends.org/en/xampp.html>

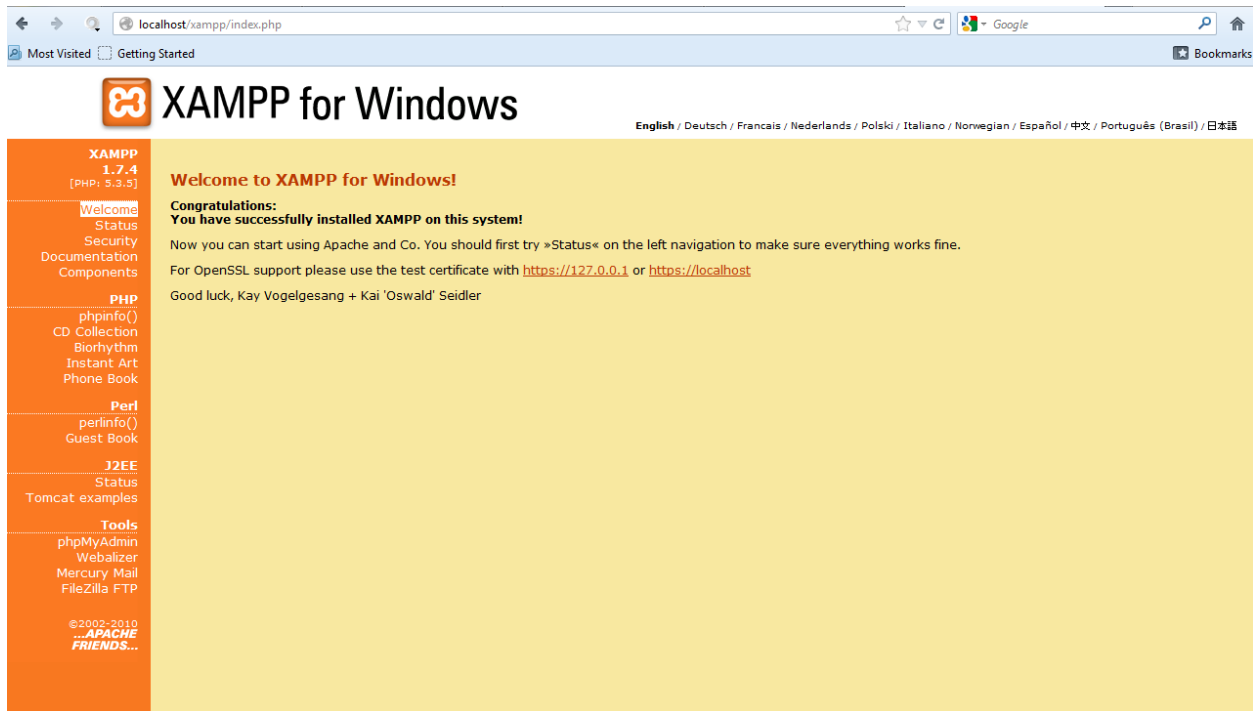
- i. Select the drive in which you want to install XAMPP.



- ii. Make sure you check the checkboxes as shown in the image.



- iii. Type 'localhost' in the browser to test if XAMPP installed properly and server is running.



2. For Windows Users Only

- i. Because names are not case-sensitive in Windows, you need to add:
lower_case_table_names=2
to the mysql configuration file to preserve the lettercase of the database and table names.
- ii. Do these steps:
 1. Open your MySQL configuration file: [drive]\xampp\mysql\bin\my.ini
 2. Look up for: # The MySQL server [mysqld]
 3. Add this right below it: lower_case_table_names = 2
 4. Save the file and restart MySQL service

3. Create 'db_webuser' database

- a. Use the webuser.sql file to create the database. This database is required to store the site database information, user information and session information.
- b. Use phpMyAdmin to create a database with name 'db_webuser' and run the 'webuser.sql' to create tables.
For example:

```
CREATE DATABASE db_webuser;  
SOURCE /path_to_file/Webuser.sql;
```

4. Create the site database

For example:

```
CREATE DATABASE stable_bci;
USE stable_bci;
SOURCE /path_to_mysql_dump_file/bci.sql;
```

5. Copy the 'ctfswb' folder in the following folder

- a. For XAMPP – drive:\xampp\htdocs\ctfswb
- b. For WAMPP – drive:\wampp\www\ctfswb

6. Update Database Config file

- a. Open file ..\ctfswb\system\application\config\database.php
- b. DO NOT EDIT the first set (db1) except for the username and password, if different.
- c. Use following set of code for each site database you need to link with the system

```
$db['db_bci']['hostname'] = "localhost";
$db['db_bci']['username'] = "root"; //Put the username for mysql here if other than root
$db['db_bci']['password'] = ""; //Put the password for mysql here if any
$db['db_bci']['database'] = ""; //Put the database name here
$db['db_bci']['dbdriver'] = "mysql";
$db['db_bci']['dbprefix'] = "";
$db['db_bci']['pconnect'] = FALSE;
$db['db_bci']['db_debug'] = TRUE;
$db['db_bci']['cache_on'] = FALSE;
$db['db_bci']['cachedir'] = "";
$db['db_bci']['char_set'] = "utf8";
$db['db_bci']['dbcollat'] = "utf8_general_ci";
```
- d. Replace 'db_bci' with the name of your choice. This name will be required in the next step to add the database name into the list of databases.
- e. Enter username, password and database name in the required fields.
- f. Please copy the set of lines in 'c.' as many times as plots you want to be able to access.

7. Use Admin Panel to add databases and users

- a. Open link - <http://localhost/ctfswb/index.php/admin>
- b. Use password - 'ctfsadmin*123' to login into panel.
- c. Add Plot
 - i. Plot Name: This is the site/database name that will be displayed in the dropdown menu on login panel.
 - ii. Database Name: This is the name you used in the last step in place of 'db_bci'
 - iii. Version of Database: The Data Entry System only works with the 'New' version, while reporting can work with both 'New ' and 'Old'.
- d. Add User
 - i. Username: Username for the login system. Use different username for different users.
 - ii. Password: Password for the login system.

- iii. Database Name: Select the database name from the list of databases you added using Add Plot form.
 - e. Add Link
 - i. This option is helpful for the plots which want to use the system as a website for users.
 - ii. Admin can add download links for the files on the server for users to download. This can be used make database dump or any particular table dump available to users.

8. System is now up for use.