

# Data Entry and Reporting System – Installation Guide

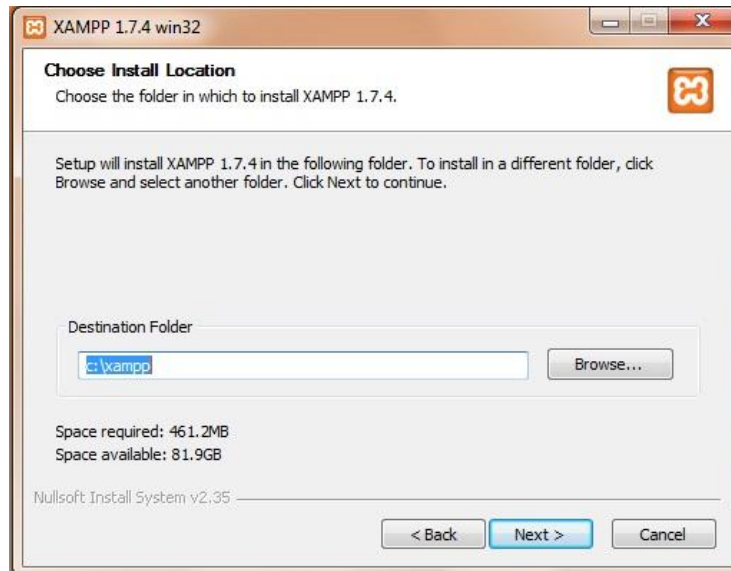
## 1. Install Xampp or Wamp on your system. (Xampp is recommended).

### a. Install Xampp(Windows)

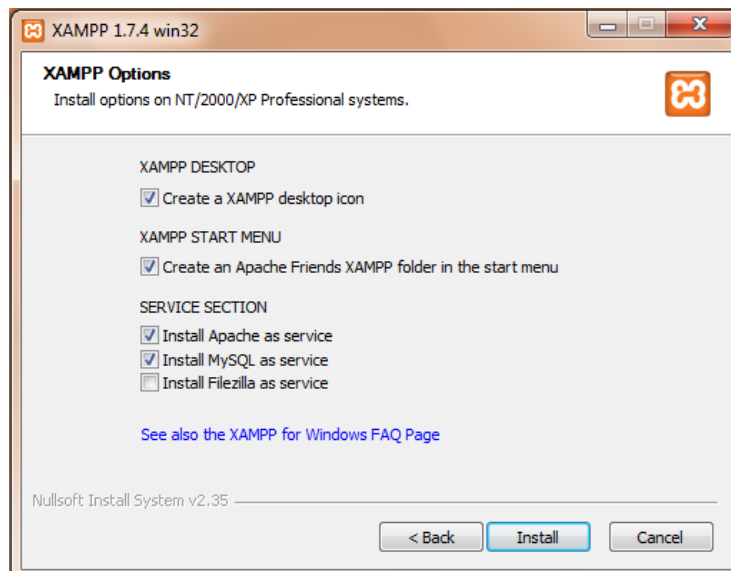
(If you have either of these already installed on your computer skip this)

Download Xampp - <http://www.apachefriends.org/en/xampp.html>

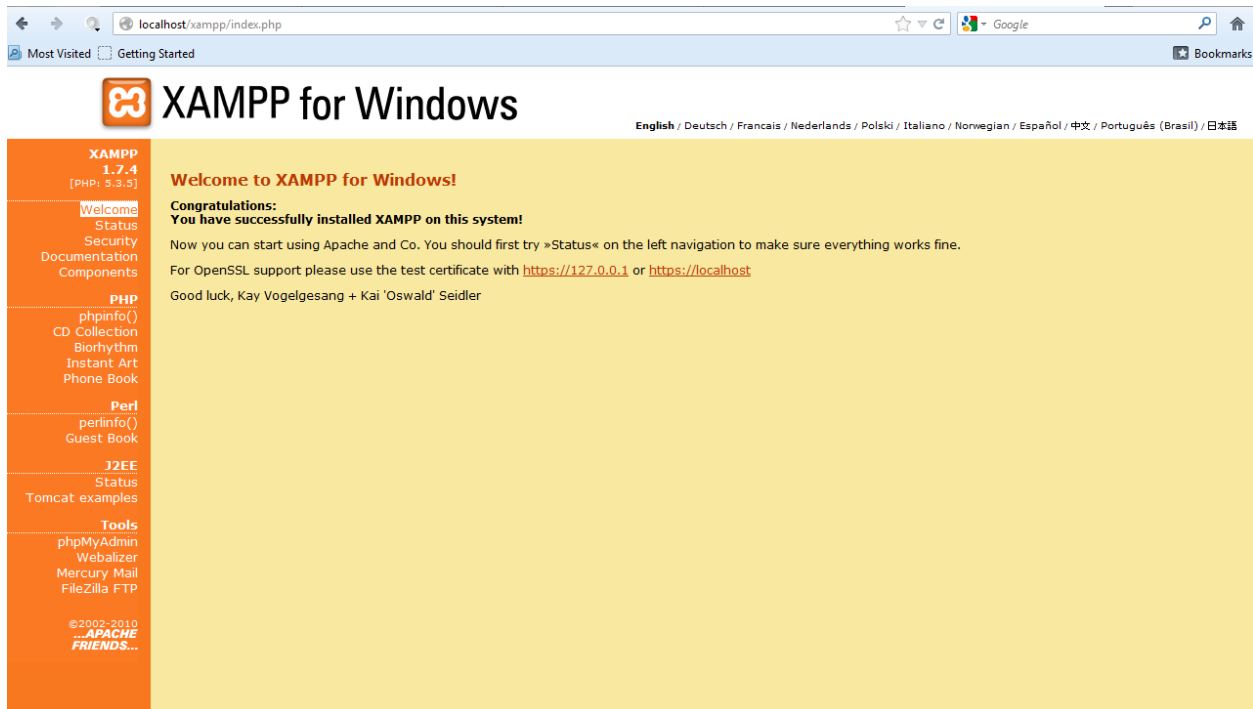
- i. Select the drive in which you want to install XAMPP.



- ii. Make sure you check the checkboxes as shown in the image.



- iii. Type 'localhost' in the browser to test if XAMPP installed properly and server is running.



## 2. For Windows Users Only

- i. Because names are not case-sensitive in Windows, you need to add:  
**lower\_case\_table\_names=2**  
to the mysql configuration file to preserve the lettercase of the database and table names.
- ii. Do these steps:
  1. Open your MySQL configuration file: [drive]\xampp\mysql\bin\my.ini
  2. Search for: # The MySQL server [mysqld]
  3. Add this right below it: lower\_case\_table\_names = 2
  4. Save the file and restart MySQL service

## 3. Create 'db\_webuser' database

- a. Use the Webuser.sql file to create the database. This database is required to store the site database information, user information and session information.
- b. Use phpMyAdmin to create a database with name 'db\_webuser' and run the 'webuser.sql' to create tables.  
For example:

```
CREATE DATABASE db_webuser;  
SOURCE /path_to_file/Webuser.sql;
```

#### 4. Create the site database

If you already have a database:

For example:

```
CREATE DATABASE stable_bci;  
USE stable_bci;  
SOURCE /path_to_mysql_dump_file/bci.sql;
```

If you need to start from a blank database:

```
CREATE DATABASE stable_bci;  
USE stable_bci;  
SOURCE /path_to_file/New_Database_Structure.sql;  
Insert the APG taxonomic Family and Genus names:  
SOURCE /path_to_file/Family.sql;  
SOURCE /path_to_file/Genus.sql;
```

#### 5. Copy the 'ctfswb' folder in the following folder

- For XAMPP – drive:\xampp\htdocs\ctfswb
- For WAMP – drive:\wamp\www\ctfswb

#### 6. Update Database Config file

- Open file ..\ctfswb\system\application\config\database.php
- DO NOT EDIT the first set (db1) except for the username and password, if different.
- Use following set of code for each site database you need to link with the system

```
$db['db_bci']['hostname'] = "localhost";  
$db['db_bci']['username'] = "root"; //Put the username for mysql here if other than root  
$db['db_bci']['password'] = ""; //Put the password for mysql here if any  
$db['db_bci']['database'] = ""; //Put the database name here  
$db['db_bci']['dbdriver'] = "mysql";  
$db['db_bci']['dbprefix'] = "";  
$db['db_bci']['pconnect'] = FALSE;  
$db['db_bci']['db_debug'] = TRUE;  
$db['db_bci']['cache_on'] = FALSE;  
$db['db_bci']['cachedir'] = "";  
$db['db_bci']['char_set'] = "utf8";  
$db['db_bci']['dbcollat'] = "utf8_general_ci";
```
- Replace 'db\_bci' with the name of your choice. This name will be required in the next step to add the database name into the list of databases.
- Enter username, password and database name in the required fields.
- Please copy the set of lines in 'c.' as many times as plots you want to be able to access.

#### 7. Use Admin Panel to add databases and users

- Open link - <http://localhost/ctfswb/index.php/admin>
- Use password - 'ctfsadmin\*123' to login into panel.
- Add Plot

- i. Plot Name: This is the site/database name that will be displayed in the dropdown menu on login panel.
    - ii. Database Name: This is the name you used in the last step in place of 'db\_bci'
    - iii. Version of Database: The Data Entry System only works with the 'New' version, while reporting can work with both 'New ' and 'Old'.
  - d. Add User
    - i. Username: Username for the login system. Use different username for different users.
    - ii. Password: Password for the login system.
    - iii. Database Name: Select the database name from the list of databases you added using Add Plot form.
  - e. Add Link
    - i. This option is helpful for the plots which want to use the system as a website for users.
    - ii. Admin can add download links for the files on the server for users to download. This can be used make database dump or any particular table dump available to users.

**8. System is now up for use.**